



## optiPoint handset

Siemens optiPoint handset is a handset with hookswitch contact for Workpoint clients in the HiPath product family. With optiPoint handset, telephoning in IP-based corporate networks is as easy as with a traditional telephone.

**SIEMENS**

Global network of innovation

Thanks to its integrated digital sound system optimized for IP telephony, optiPoint handset guarantees very high levels of voice quality. The optiPoint handset is connected to the PC workstation's USB interface. Installation can be performed without activating the computer and without a sound card. This solution is thus ideal for both desktop computers and notebooks alike. With its integrated headset port, the optiPoint handset is perfectly suitable for use in professional environments.

The following Workpoint clients support optiPoint handset:

- optiClient 130 V2.0,
- optiClient 350 V2.5,
- optiClient 360 V2.5 Revision 1,
- optiClient 370/380 V2.5.

## Overview

### Features

- Handset with hookswitch contact
- Headset port
- Power supply via the USB interface

### Customer benefits

- Very high level of voice quality
- Simple installation (plug&play) independent of the PC sound card
- Cost-effective alternative to a multimedia keyboard

## Technical data

### System requirements

The following Workpoint clients support optiPoint handset:

- optiClient 130 V2.0
- optiClient 350 V2.5
- optiClient 360 V2.5 Revision 1
- optiClient 370/380 V2.5

### Operating systems supported

- Windows 2000
- Windows ME
- Windows 98

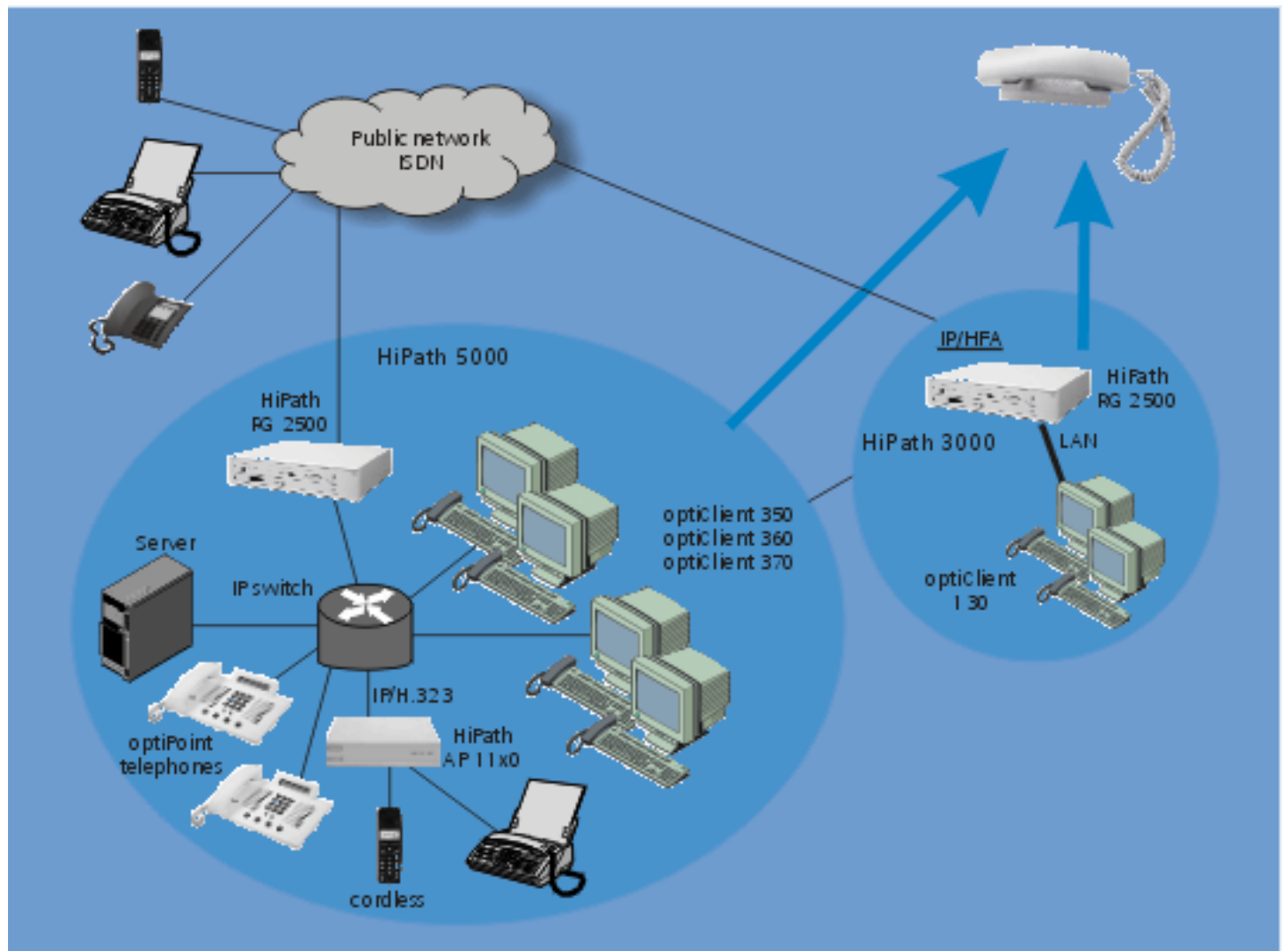
#### **Note:**

The optiPoint handset is connected via the USB interface, which is supported by Windows 98, ME and Windows 2000. The Fujitsu Siemens multimedia keyboard must be maintained if the Workpoint client is installed under Windows NT 4.0.

### Parts supplied

- optiPoint handset - handset rest
- optiPoint handset - handset
- Handset rest/handset connecting cable
- USB cable

## System configuration



# Our strengths - Your advantages

Siemens is known worldwide as a trailblazer in the advancement of information and communication technologies. No other company offers such a comprehensive and innovative product portfolio.

With the one-of-a-kind Siemens convergence architecture, HiPath, guide your customers to a secure and flexible migration into the world of innovative IP convergence solutions.

[www.hipath.com](http://www.hipath.com)

© Siemens AG 2002 • Information and Communication Networks • Hofmannstr. 51 • D-81359 München

**Reference No.: A31002-A2000-A400-2-7629**

The information provided in this document contains merely general descriptions or characteristics of performance which in case of actual use do not always apply as described or which may change as a result of further development of the products. An obligation to provide the respective characteristics shall only exist if expressly agreed in the terms of contract. Availability and technical specifications are subject to change without notice. Printed in Federal Republic of Germany.